

# Specification of Product

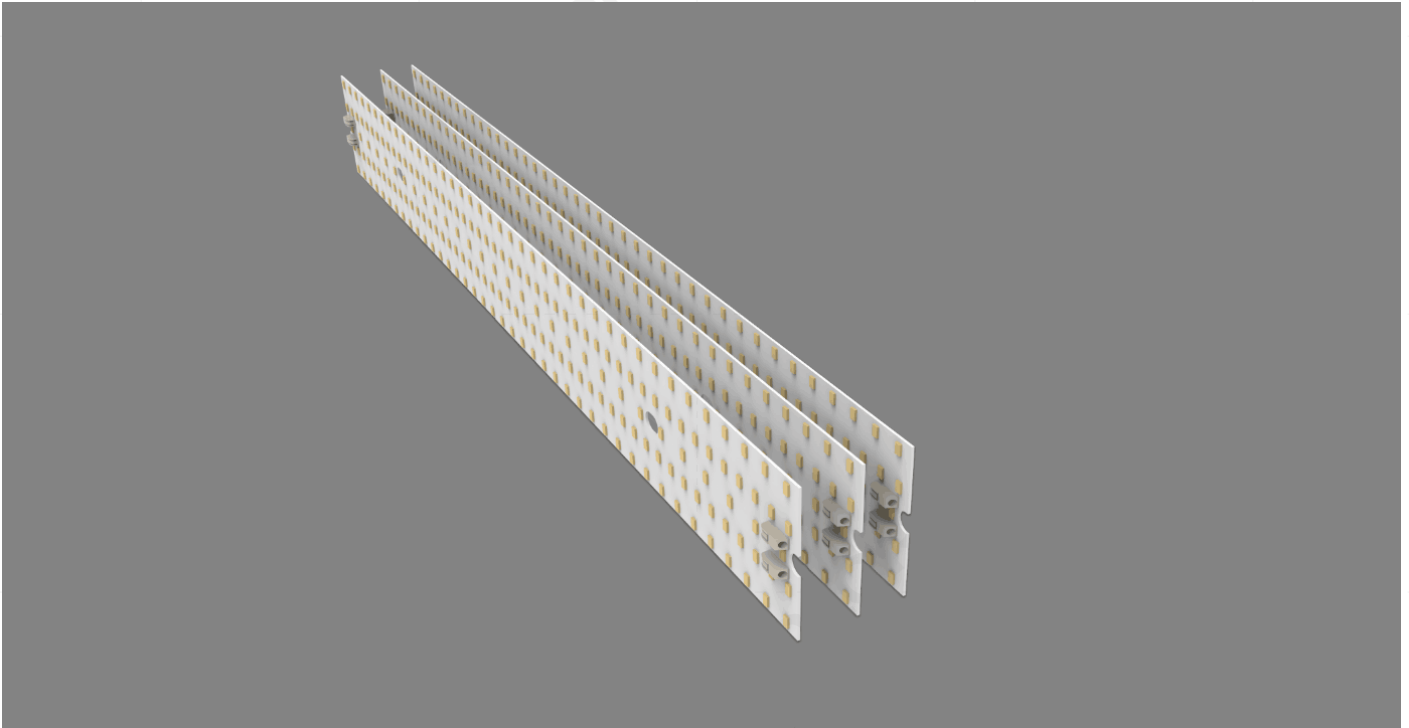
Rigid Modular for LLS 2.0



## CONTENTS

◆	Introduction.....	3
◆	Technical Parameter.....	4
◆	Performance Parameter.....	6
◆	Package.....	9
◆	Precautions.....	10

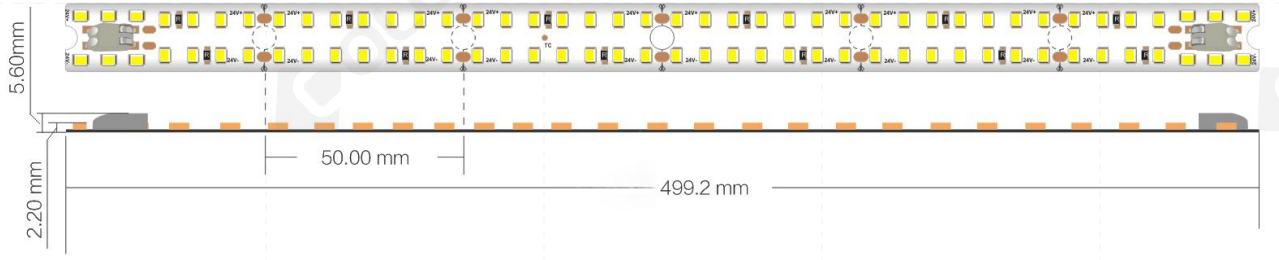
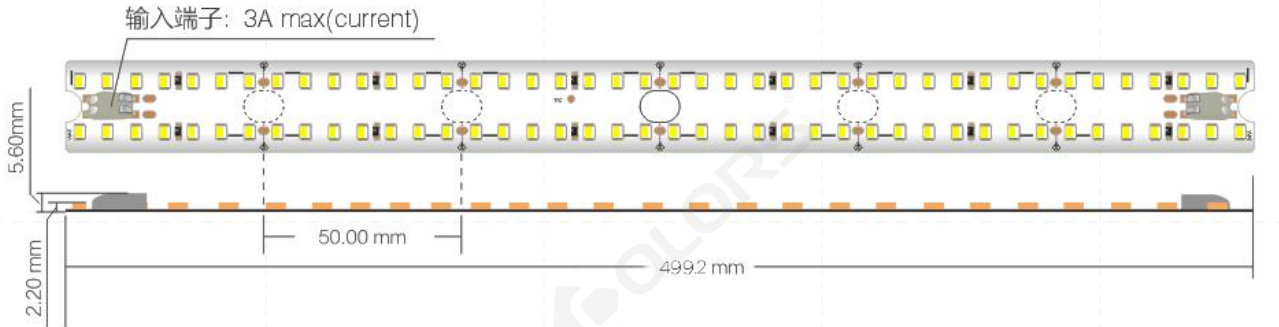
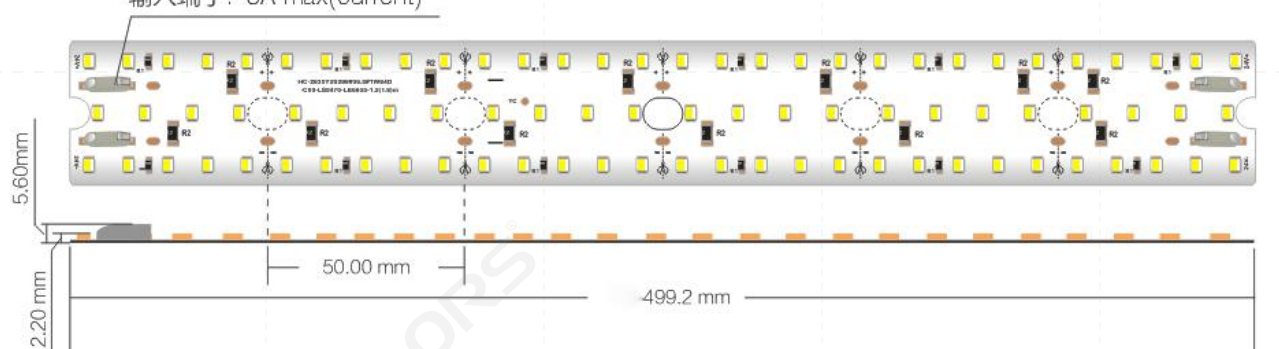
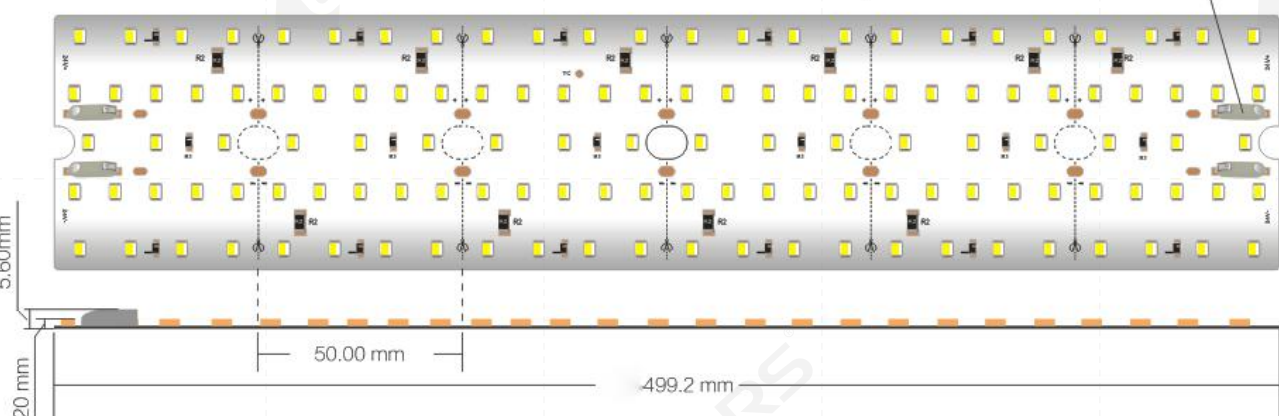
## Introduction:



### Strip for Profile:

Designed to match the profile, this strip provides a wide range of color temperature and two CRI by using the SMD2835 LED beads and a highly mechanized manner SMT. Its lighting effect can reach an optimal state due to the professional lighting design and reasonable arrangement of LED beads. There are two kinds of strips -- flexible strip and rigid modular -- which can be applied in different luminaires. In addition, the length of rigid modular is customizable to match various fixtures with different length.

**Technical Parameter (1):**

<p><b>DY8280B-24V</b> <b>-17mm</b></p>	
<p><b>DY8280B-24V</b> <b>-23mm</b></p>	<p>输入端子: 3A max(current)</p> 
<p><b>DY8280B-24V</b> <b>-36mm</b></p>	<p>输入端子: 3A max(current)</p> 
<p><b>DY8420B-24V</b> <b>-62mm</b></p>	<p>输入端子: 3A max(current)</p> 

**Technical Parameter (2):**

<p><b>DY8560-24V</b> <b>-88mm</b></p>	
<p><b>DY8560-24V</b> <b>-36mm</b></p>	

**Performance Parameter (1):**

Series (Length)	Order No.	CCT	Lumen (Lm/PC)	CRI	LED Beads (Pcs/M)	Voltage (V)	Rated Current (A/M)	Rated Power (W/M)	Cutting (mm/Unit)	Suitable for
DY8280B-2 4V-17mm (499.2mm)	DY8280B2417NO-8LWCXL000XC005	2200-2400K	1200	>80	280	24	0.85	20	50	LS3360
	DY8280B2417NO-8SWCXL000XC005	2600-2800K	1250							
	DY8280B2417NO-8WWCXL000XC00	2800-3200K	1300							
	DY8280B2417NO-8NWCXL000XC005	3800-4200K	1350							
	DY8280B2417NO-8DWCXL000XC005	4800-5200K	1350	>95	280	24	0.85	20	50	
	DY8280B2417NO-8WCXL000XC0050	5800-6500K	1270							
	DY8280B2417NO-9SWCXL000XC005	2600-2800K	1050							
	DY8280B2417NO-9WWCXL000XC00	2800-3200K	1100							
	DY8280B2417NO-9NWCXL000XC005	3800-4200K	1150							
	DY8280B2417NO-9DWCXL000XC005	4800-5200K	1150							
DY8280B-2 4V-23mm (499.2mm)	DY8280B2423NO-8LWCXL000XC005	2200-2400K	1200	>80	280	24	0.85	20	50	LS4067 LE5535
	DY8280B2423NO-8SWCXL000XC005	2600-2800K	1250							
	DY8280B2423NO-8WWCXL000XC00	2800-3200K	1300							
	DY8280B2423NO-8NWCXL000XC005	3800-4200K	1350							
	DY8280B2423NO-8DWCXL000XC005	4800-5200K	1350	>95	280	24	0.85	20	50	
	DY8280B2423NO-8WCXL000XC0050	5800-6500K	1270							
	DY8280B2423NO-9SWCXL000XC005	2600-2800K	1050							
	DY8280B2423NO-9WWCXL000XC00	2800-3200K	1100							
	DY8280B2423NO-9NWCXL000XC005	3800-4200K	1150							
	DY8280B2423NO-9DWCXL000XC005	4800-5200K	1150							

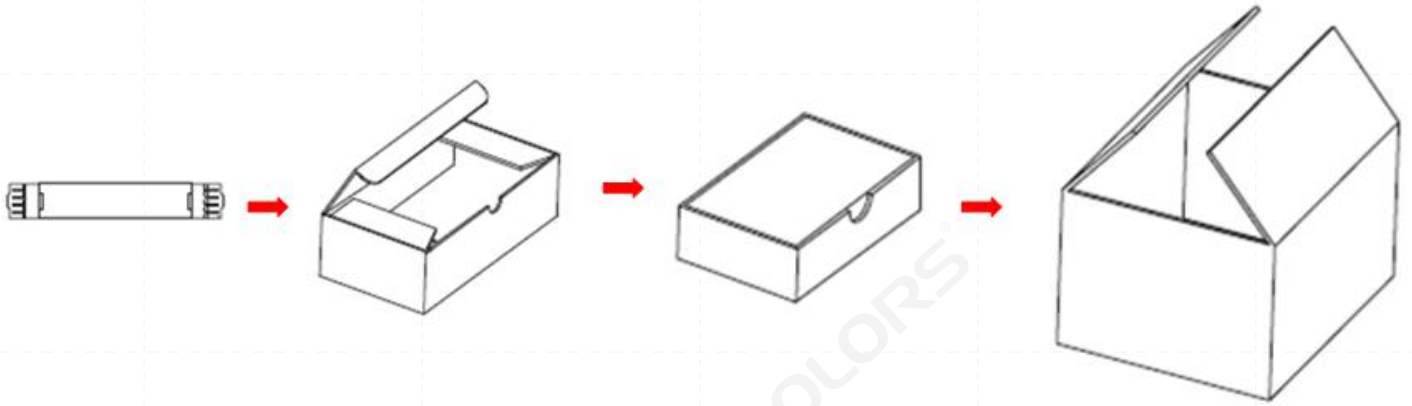
**Performance Parameter (2):**

Series (Length)	Order No.	CCT	Lumen (Lm/PC)	CRI	LED Beads (Pcs/M)	Voltage (V)	Rated Current (A/M)	Rated Power (W/M)	Cutting (mm/Unit)	Suitable for
DY8280B-2 4V-36mm (499.2mm )	DY8280B2436NO-8LWCXL000XC005	2200-2400K	1475	>80	280	24	1.05	25	50	LS5470 LS5470(F) LE6935 LE6935(F) LR5535(A) LR5535(B)
	DY8280B2436NO-8SWCXL000XC005	2600-2800K	1550							
	DY8280B2436NO-8WWCXL000XC00	2800-3200K	1600							
	DY8280B2436NO-8NWCXL000XC005	3800-4200K	1625							
	DY8280B2436NO-8DWCXL000XC005	4800-5200K	1625	>95	280	24	1.05	25	50	
	DY8280B2436NO-8WCXL000XC0050	5800-6500K	1550							
	DY8280B2436NO-9SWCXL000XC005	2600-2800K	1325							
	DY8280B2436NO-9WWCXL000XC00	2800-3200K	1350							
	DY8280B2436NO-9NWCXL000XC005	3800-4200K	1375							
	DY8280B2436NO-9DWCXL000XC005	4800-5200K	1375							
DY8420B-2 4V-62mm (499.2mm )	DY8420B2462NO-8LWCXL000XC005	2200-2400K	1750	>80	420	24	1.25	30	50	LE9435 LS7977
	DY8420B2462NO-8SWCXL000XC005	2600-2800K	1850							
	DY8420B2462NO-8WWCXL000XC00	2800-3200K	1900							
	DY8420B2462NO-8NWCXL000XC005	3800-4200K	1950							
	DY8420B2462NO-8DWCXL000XC005	4800-5200K	1950	>95	420	24	1.25	30	50	
	DY8420B2462NO-8WCXL000XC0050	5800-6500K	1850							
	DY8420B2462NO-9SWCXL000XC005	2600-2800K	1575							
	DY8420B2462NO-9WWCXL000XC00	2800-3200K	1625							
	DY8420B2462NO-9NWCXL000XC005	3800-4200K	1650							
	DY8420B2462NO-9DWCXL000XC005	4800-5200K	1650							

### Performance Parameter (3):

Series (Length)	Order No.	CCT	Lumen (Lm/PC)	CRI	LED Beads (Pcs/M)	Voltage (V)	Rated Current (A/M)	Rated Power (W/M)	Cutting (mm/Unit)	Suitable for
DY8560-24V- 88mm (499.2mm)	DY85602488NO- 8LWCXL000XC00	2200-2400K	2275	> 80	560	24	1.67	40	50	LS10570 LS12335
	DY85602488NO- 8SWCXL000XC00	2600-2800K	2400							
	DY85602488NO- 8WWCXL000XC0	2800-3200K	2450							
	DY85602488NO- 8NWCXL000XC0	3800-4200K	2525							
	DY85602488NO- 8DWCXL000XC0	4800-5200K	2525							
	DY85602488NO- 8WCXL000XC00	5800-6500K	2400	> 95	560	24	1.67	40	50	
	DY85602488NO- 9SWCXL000XC00	2600-2800K	2050							
	DY85602488NO- 9WWCXL000XC0	2800-3200K	2075							
	DY85602488NO- 9NWCXL000XC0	3800-4200K	2150							
	DY85602488NO- 9DWCXL000XC0	4800-5200K	2150							
DY8560-24V -36mm (499.2mm)	DY85602436NO- 8SWWCXL000XC 0050	2700-6000K	1700 (2700K)	> 80	560	24	1.04	25	50	LS5470 LS5470(F) LE6935 LE6935(F) LR5535(A) LR5535(B)
			1650 (6000K)							

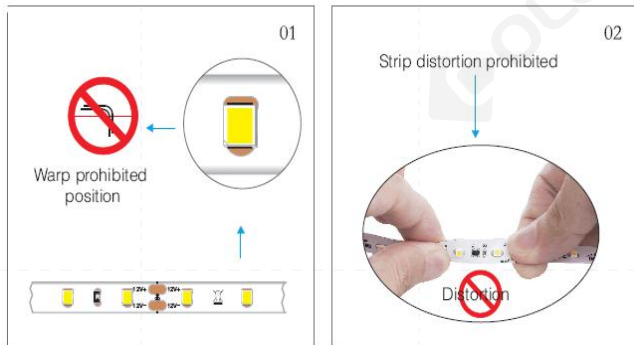
**Package:**



Type	Length	Specification of Interior Box		Specification of Exterior Box		N.W	G.W
		Size	Qty	Size	Qty		
DY8280B-24V-17mm	499.2	517*90*72mm	20Pcs/box	530*380*200mm	160 Pcs/box		
DY8280B-24V-23mm		517*90*72mm	20 Pcs/box	530*380*200mm	160 Pcs/box		
DY8280B-24V-36mm		517*90*98mm	20 Pcs/box	530*380*200mm	160 Pcs/box		
DY8420B-24V-62mm		517*90*72mm	10 Pcs/box	530*380*200mm	80 Pcs/box	6.04kg	8.54kg
DY8560-24V-88mm		517*90*98mm	10 Pcs/box	530*380*200mm	80 Pcs/box	8.64kg	11.14kg
DY8560-24V-36mm		517*90*98mm	10 Pcs/box	530*380*200mm	160 Pcs/box		

## Precautions:

### Do not bend



## Troubleshooting

NO.	Problem	Cause	Solutions
1	All LED strips are not lit or the colors cannot be changed	No power in switch power supply	Make sure the power is on
		The electrode of strip is connected reversely	Connect the strip to the electrode of power supply correctly
		Short circuit of exterior power supply, Automatic short-circuit protection of switch power supply	Detect the short circuit faults, repower the LED
		The fuse of power supply is burned	Change the fuse
2	Some strips are not lit or parts of the colors cannot be changed	No power in parts of the switch power supply	Check the power system and detect the faults
		Something wrong with the circuit in some strips	Check the power system and detect the faults
3	Inconsistent brightness of LED or the LED is not bright enough	Overload of power supply	Add power supplies
		Too much loss in switch power supply circuit	Thicken the wire or adjust the position of power supply (make it closer to the strip), make sure the voltage of every 5m strip is higher than the 95% of rated voltage
4	Some LED beads are not lit	Static breakdown	Check the related electrical appliances and make sure the LED is connected to the earth wire correctly, change the LED beads
		Faradic electricity breakdown of equipment or electricity leakage	Check the related electrical appliances and make sure the LED is connected to the earth wire correctly, change the LED beads

## Disclaimer

- Please make sure the LED strip is driven by 24VDC isolated power supply and the ripple of the constant voltage source must be less than 5%. Do not use RC buck or non-isolated power supply to drive the LED strip.
- To ensure the long life span and stability of strip, please do not make the bending diameter under 60mm or fold the strip to prevent the LED beads and strip from damage.
- To ensure the long life span of strip, please do not pull the power supply wire hard during using and make sure the strip is protected from impact to keep the LED beads safe.
- Do not confuse the anode with the cathode during installation and make sure the power supply match the voltage of product to prevent the strip from damage.
- The LED strip should be kept in a dry and sealed place for a period that lasts not too long. Please unpacking the strip before using. Working temperature: -20°C ~+45°C, storage temperature: -0°C ~ +60°C
- Do not touch the AC power supply when the power is on or there is a risk of electric shock.
- The power supply should retain a margin of 20% during using (it's recommended to use only 80% of the power) to make sure there is enough voltage to drive the strip.
- Do not use any acid or alkaline glue (not including glass glue) to fix the product.

